

Sensing Edge

ME112



TOUCH SENSITIVE SIGNALING

ME112 is a pressure sensitive sensing edge that is manufactured to user specifications for length and outlet location. When touched activated, ME112 sends an immediate signal to operator controls to stop and/or reverse door operation. This sensing edge retrofits easily to 1-3/8-inch sectional doors with accepting bottom bar, as well as multiple compatible mounting channels. This slide-in style edge features a double-T mounting design, which provides superior stability for sectional overhead commercial doors and material handling system applications.



APPLICATIONS

- Commercial sectional doors
- Material handling systems

FEATURES

- Easy to install
- Optimum size for 1-3/8 inch thick surfaces
- Double-T design for added stability
- Mounts vertically or horizontally
- Sealed assembly impervious to dust and debris
- Mounting channel options
- Custom manufactured to user specifications for length and outlet location
- Patented Alumaglas™ for superior performance (electric option)
- UL 325 Recognized Component
- 1-year warranty
- Made in USA

610-869-4422
www.milleredge.com





Sensing Edge

ME112

GENERAL SPECIFICATIONS

Color	● Black
Length	Order in 1/4 in. increments (manufacturing tolerance $\pm 1/4$ in.)
Maximum Length	Electric ⚡: 100 ft., Air-Wave 🌊: 60 ft., Pneumatic 🌬️: 18 ft.
Sensitivity	Nominal 6-10 lbf
Lead Wire	SJTO, 22 gauge, 2 ft. length
Wire Outlet Location	Left, right, end, or top
Electrical Maximum	24 volts AC/DC, 1/2 amp
Electrical Configuration	Normally open
Operating Temperature	Meets or exceeds UL requirement
Exterior Materials	Flexible PVC
Contact Element	Alumaglas™
Agency Approvals	us UL 325 Recognized Component

OPTIONS

Configurations:

- Monitored
 - 2-Wire ⚡
 - 10K resistor
 - 8.2K resistor
 - Diode capacitor
 - 4-Wire ⚡
- Non-Monitored
 - 2-Wire ⚡

Other Options:

- Coil cord attached
- 10 ft. lead wire
- Series connect option
- Mounting channels

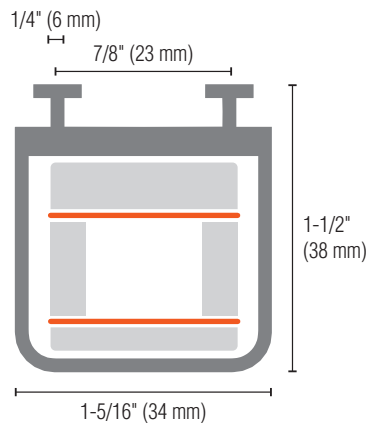
OPTIONAL MOUNTING CHANNELS



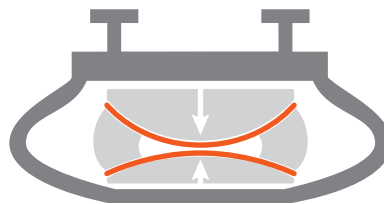
ME112-C3
High Density PVC

ME112-C7
High Density PVC

DIMENSIONS

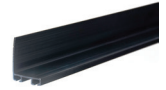


ALUMAGLAS TECHNOLOGY



Miller Edge's patented Alumaglas and flexible switch assembly provide extremely low contact resistance for universal applications.

RELATED PRODUCTS



MOUNTING CHANNELS



TRANSMITTERS/RECEIVERS



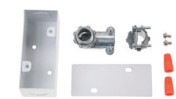
INTERFACE MODULES



COIL CORDS



RETRACTING REELS



JUNCTION BOXES



EDGE TESTER



Contact Miller Edge to ensure compatibility.

© Miller Edge, Inc. All rights reserved
ME112_20201218