

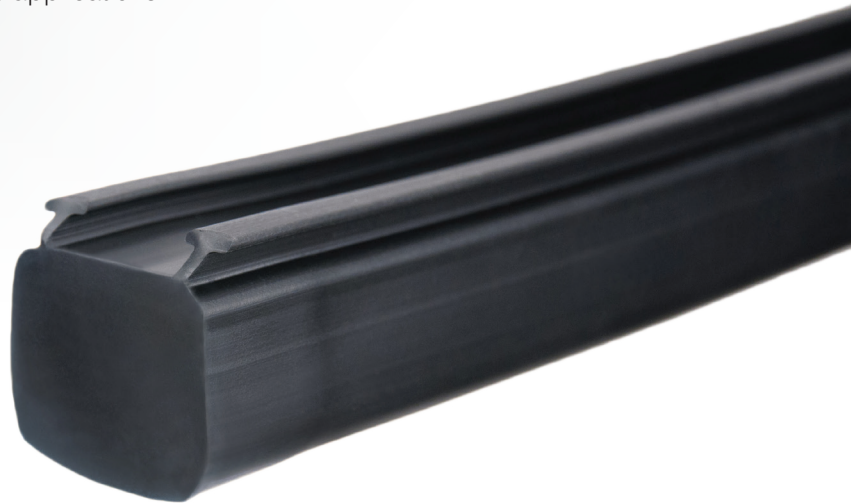
Sensing Edge

ME113



TOUCH SENSITIVE SIGNALING

ME113 is a pressure sensitive sensing edge that is custom manufactured to user specifications for length and outlet location. When touched activated, ME113 sends an immediate signal to operator controls to stop and/or reverse door operation. This slide-in style edge features a double-T mounting design, which provides superior stability for sectional overhead commercial doors and material handling systems applications.



APPLICATIONS

- Commercial sectional doors
- Material handling systems

FEATURES

- Easy to install
- Optimum size for 1-1/2 inch thick surfaces
- Double-T design for added stability
- Mounts vertically or horizontally
- Sealed assembly impervious to dust and debris
- Custom manufactured to user specifications for length and outlet location
- Patented Alumaglas™ for superior performance (electric option)
- UL 325 Recognized Component
- 1-year warranty
- Made in USA

610-869-4422
www.milleredge.com





Sensing Edge

ME113

GENERAL SPECIFICATIONS

Color	● Black
Length	Order in 1/4 in. increments (manufacturing tolerance $\pm 1/4$ in.)
Maximum Length	Electric ⚡: 100 ft., Air-Wave 🌊: 60 ft., Pneumatic 🌬️: 18 ft.
Sensitivity	Nominal 7-12 lbf
Lead Wire	SJTO, 22 gauge, 2 ft. length
Wire Outlet Location	Left, right, top, or universal end plug
Electrical Maximum	24 volts AC/DC, 1/2 amp
Electrical Configuration	Normally open
Operating Temperature	Meets or exceeds UL requirement
Exterior Materials	Flexible PVC
Contact Element	Alumaglas™
Agency Approvals	us UL 325 Recognized Component

OPTIONS

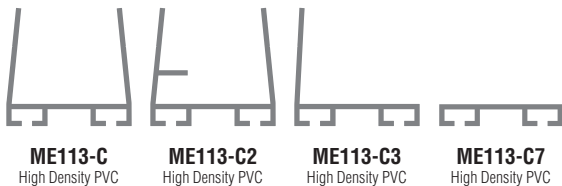
Configurations:

- Monitored
 - 2-Wire ⚡
 - 10K resistor
 - 8.2K resistor
 - Diode capacitor
 - 4-Wire ⚡
- Non-Monitored
 - 2-Wire ⚡
 - Air-Wave 🌊
 - Pneumatic 🌬️

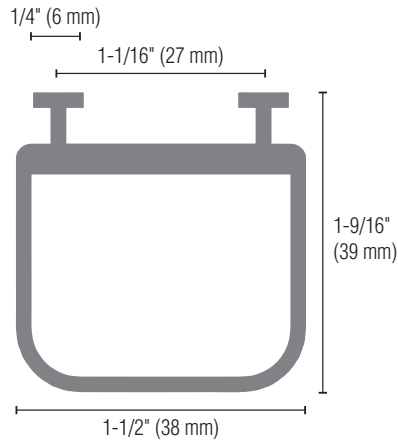
Other Options:

- Coil cord attached
- End flaps
- 10 ft. lead wire
- Universal end plug
- Series connect option
- Mounting channels

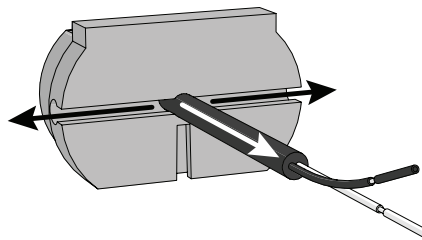
OPTIONAL MOUNTING CHANNELS



DIMENSIONS



OPTIONAL UNIVERSAL END PLUG



RELATED PRODUCTS



MOUNTING CHANNELS



TRANSMITTERS/RECEIVERS



INTERFACE MODULES



COIL CORDS



RETRACTING REELS



JUNCTION BOXES



EDGE TESTER



Contact Miller Edge to ensure compatibility.

© Miller Edge, Inc. All rights reserved
ME113_20201218