

Sensing Edge

ME120



TOUCH SENSITIVE SIGNALING

ME120 is ideal for a wide variety of applications, from motorized doors and gates to industrial safeguarding on manufacturing equipment. Applications include: along conveyor systems to detect operator reach in, below lifts to protect from pinch points, and on a wide variety of plant equipment where touch-sensitive detection is desired.

Tech Tip: The ME120 sensing edge paired with the ME120-C5 mounting channel creates a “sweep edge” that safeguards the entrapment zone on driveways and curbs along the path of travel below a swinging gate, as defined by UL 325 and ASTM F2200.



APPLICATIONS

- Slide gates
- Swing gate sweep edge
- Rolling shutters
- Commercial motorized doors
- Conveyor systems
- Lift & machinery pinch points
- Machine guarding
- Elevator doors

FEATURES

- Optimum size for 1-1/2 inch gate surfaces
- Standard and custom lengths available
- Easy to install
- Mounts vertically or horizontally
- Sealed assembly impervious to dust and debris
- Various mounting channel options
- Custom manufactured to user specifications for color, length, and outlet location
- Patented Alumaglas™ for superior performance (electric option)
- UL 325 Recognized Component
- 1-year warranty
- Made in USA

610-869-4422
www.milleredge.com





Sensing Edge

ME120

GENERAL SPECIFICATIONS

Color	● Black or ● Yellow
Length	Order in 1/4 in. increments (manufacturing tolerance $\pm 1/4$ in.)
Maximum Length	Electric ⚡: 100 ft., Air-Wave 🌊: 60 ft., Pneumatic ⚙️: 18 ft.
Sensitivity	Nominal 6-10 lbf
Lead Wire	SJTO, 18 gauge, 2 ft. length
Wire Outlet Location	Left, right, end, or top
Electrical Maximum	24 volts AC/DC, 1/2 amp
Electrical Configuration	Normally open
Operating Temperature	Meets or exceeds UL requirement
Exterior Materials	Flexible PVC
Contact Element	Alumaglas™
Agency Approvals	UL 325 Recognized Component

OPTIONS

Configurations:

- Monitored
 - 2-Wire ⚡
 - 10K resistor
 - 8.2K resistor
 - Diode capacitor
 - 4-Wire ⚡
- Non-Monitored
 - 2-Wire ⚡
 - Air-Wave 🌊
 - Pneumatic ⚙️

Other Options:

- Coil cord attached
- Soft ends
- 10 ft. lead wire
- Series connect option
- Mounting channels
- Length:
 - 4 ft. and 5 ft. lengths conveniently packaged
 - Manufactured to user specifications for length

OPTIONAL MOUNTING CHANNELS



ME120-PC
High Density PVC



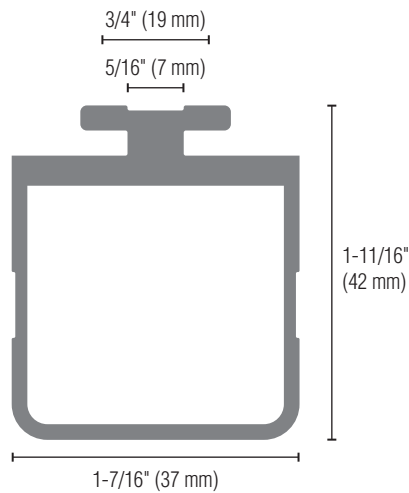
ME120-C
Aluminum (black)



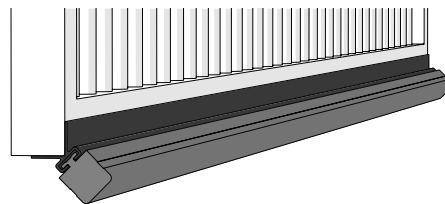
ME120-C5
Aluminum (black)



DIMENSIONS

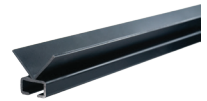


SWEEP EDGE: ME120+ME120-C5



BOTTOM EDGE OF AUTOMATED SWING GATE
ME120 + ME120-C5 MOUNTING CHANNEL

RELATED PRODUCTS



MOUNTING CHANNELS



TRANSMITTERS/RECEIVERS



INTERFACE MODULES



JUNCTION BOXES



EDGE TESTER

Contact Miller Edge to ensure compatibility.

© Miller Edge, Inc. All rights reserved
ME120_20201218