

# 3-Sided Sensing Edge

## MGO20



## TOUCH SENSITIVE SIGNALING

The MGO20 sensing edge offers three-sided activation for enhanced protection. This slide-in style edge has a small profile which allows for versatility to suit a wide variety of applications from motorized doors and gates to industrial safe guarding on plant equipment. MGO20 is compatible with two mounting channel options and can be custom manufactured to user specifications for color, length, and outlet location.



### APPLICATIONS

- Motorized gates
  - Slide gate draw-in posts
  - Pockets & pivots points
  - Barrier arms

### FEATURES

- 3-sided activation
- Easy to install
- Optimum size for 1-1/2 inch gate surfaces
- Mounts vertically or horizontally
- Sealed assembly impervious to dust and debris
- Mounting channel options
- Custom manufactured to user specifications for color, length, and outlet location
- Patented Alumaglas™ for superior performance
- UL 325 Recognized Component
- 1-year warranty
- Made in USA

610-869-4422  
[www.milleredge.com](http://www.milleredge.com)





# 3-Sided Sensing Edge

## MGO20

### GENERAL SPECIFICATIONS

Color	● Black or ● Yellow
Length	Order in 1/4 in. increments (manufacturing tolerance $\pm 1/4$ in.)
Maximum Length	10 ft. (additional shipping charges apply to lengths over 8 ft.)
Sensitivity	Nominal 4-7 lbf
Lead Wire	SJTO, 18 gauge, 2 ft. length
Wire Outlet Location	Left, right, or end
Electrical Maximum	24 volts AC/DC, 1/2 amp
Electrical Configuration	Normally open
Operating Temperature	-30 °F to 155 °F (-34 °C to 68 °C)
Exterior Materials	Flexible PVC
Contact Element	Alumaglas™
Agency Approvals	UL 325 Recognized Component

### OPTIONS

#### Configurations:

- Monitored
  - 2-Wire
  - 10K resistor
  - 8.2K resistor
  - Diode capacitor
  - 4-Wire
- Non-Monitored
  - 2-Wire

#### Other Options:

- Length:
  - 4 ft. and 5 ft. lengths conveniently packaged
  - Manufactured to user specifications for length
- 10 ft. lead wire
- Series connect option

### OPTIONAL MOUNTING CHANNELS

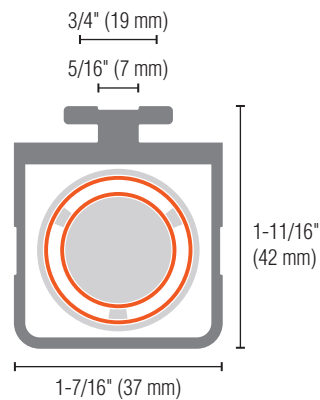


**ME120-PC**  
High Density PVC

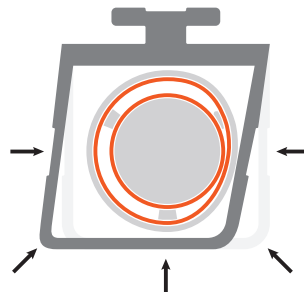


**ME120-C**  
Aluminum (black)

### DIMENSIONS

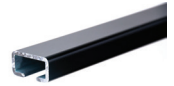


### ALUMAGLAS TECHNOLOGY



Miller Edge's patented Alumaglas and flexible switch assembly provide extremely low contact resistance for universal applications.

### RELATED PRODUCTS



MOUNTING CHANNELS



TRANSMITTERS/RECEIVERS



INTERFACE MODULES



INTERFACE MODULES



EDGE TESTER



Contact Miller Edge to ensure compatibility.

© Miller Edge, Inc. All rights reserved  
MGO20\_20201218